

ASTINA



M A Z D A
A S T I N A .

Style, performance and safety have lifted the new Mazda Astina above its rivals. It comes as a Hardtop or a Hatchback, with either a 2.0 litre V6 or a 1.8 litre engine. Both manual and automatic transmission are available. Everything from a 5-speaker stereo system to a rear window heater/demister are at the push of a dashboard button. Luxuries like central locking, electrically operated side mirrors and windows are standard. Safety has also been built into the design. The Frontal Impact Moderating System (FIMS) helps absorb impact, as do the side door impact boxes. In the 2.0 litre Astina dual airbags and ABS are standard; and the 1.8 litre has a standard driver's airbag. So why not look into the Astina? Where style isn't at the expense of practicality; and practicality isn't at the expense of style.





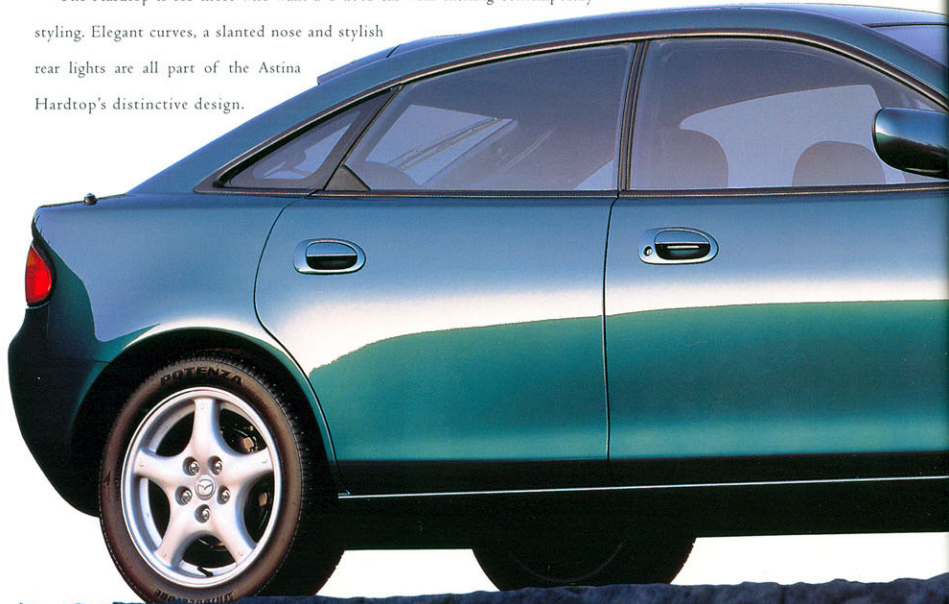
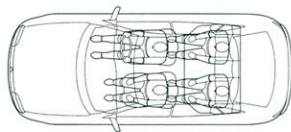
A SYMBOL OF EXCELLENCE

Mazda is proud to introduce the new brand symbol that captures our future aspirations and corporate spirit. The stylised letter 'M' evokes an image of wings in flight and symbolises Mazda's flight towards the future - a future borne of our quest to continuously grow and improve, and made possible by our employees' creativity, dedication and enthusiasm. Our brand symbol affirms our commitment to providing high quality products which offer unique driving pleasure and distinctiveness, and a sales and service experience that surpasses customers' expectations and earns their confidence and loyalty. It is our goal that this symbol, and the spirit it represents, will become a pre-eminent symbol of excellence to Mazda's customers worldwide.

THE ASTINA RANGE.

The Astina Hatchback and the Astina Hardtop are so beautifully designed, you could forget just how practical they both are. The Hatchback has the style and silhouette of a sporty coupe: a slanted nose with extra compact projector headlights; a unique raised rear edge on the roof; and a stylish spoiler which is optional on the 1.8 litre model. But it also has the down to earth convenience of a 5-door hatch, so it's perfect for day to day driving.

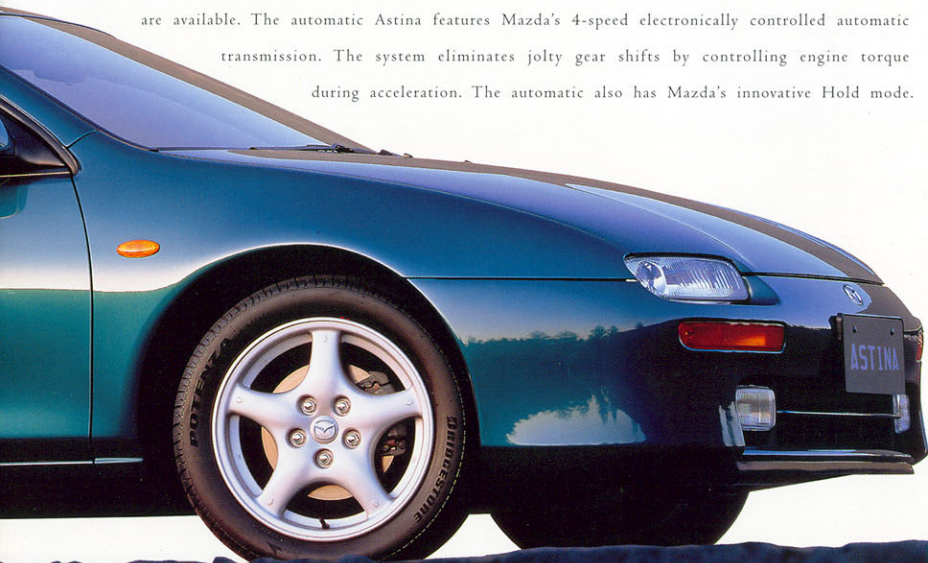
The Hardtop is for those who want a 4-door car with exciting contemporary styling. Elegant curves, a slanted nose and stylish rear lights are all part of the Astina Hardtop's distinctive design.



The Astina Hardtop and Hatchback come with a 1.8 litre 4 cylinder, 16-valve DOHC, or a 2.0 litre V6 DOHC 24-valve engine, both are electronically fuel injected and feature the Variable Resonance Induction System (VRIS), specially tuned for high rpm. Both engines deliver high torque smoothly and quietly, providing a comfortable ride in any situation.



Acceleration response and power at high rpm have been enhanced, while engine noise has been reduced. Power steering is standard on all models, giving the Mazda Astina more precise handling. Both automatic and manual are available. The automatic Astina features Mazda's 4-speed electronically controlled automatic transmission. The system eliminates jolty gear shifts by controlling engine torque during acceleration. The automatic also has Mazda's innovative Hold mode.





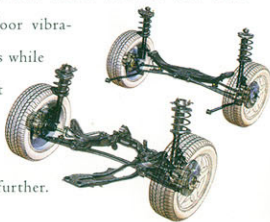
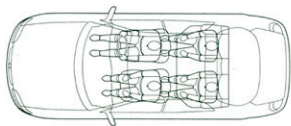


This enables the driver to select and hold first, second or third gears manually. Which means a smoother ride and better driver control.

The 5-speed manual features gear ratios tailored

to match both engine types. To provide ease of operation the Astina has 'synchromesh' on reverse gear as well as all forward gears. Changes to the gear mechanisms has also reduced noise. The braking system consists of large diameter ventilated front discs and solid rear discs to ensure safe and smooth driving in all conditions. ABS is standard in the 2.0 litre Astina.

The Astina uses a highly developed 4-wheel strut suspension system for more responsive handling. The suspension settings are tailored for both the 1.8 litre engine and 2.0 litre engine, taking into account their different characteristics. So every ride in an Astina is a smooth ride. The beautiful body of the Astina is also extremely rigid. Its stress supporting mainframes are as straight as possible and each critical joint has been reinforced. This not only helps the Astina endure collision impact, it also reduces noise and vibration. Sections of the pillars, side frames and sills have been enlarged in order to minimise floor vibrations while idling, and body shakes while travelling at high speed. The strut suspension system and vibration dampening material within the wheel housings reduce noise even further.



INTERIOR COMFORT.

The Astina's short nose is part of the car's overall stylish look. But it also allows for a more spacious cabin area, with both the Hatchback and Hardtop seating five adults.

Front bucket seats are standard in the Mazda Astina and provide support and comfort whether it be a long journey or just a short trip. The rear seats are a practical 60:40 split-folding type.



The instrument panel and centre console are curved towards the driver's seat for easy access and better vision of the controls.

Driver and passenger comfort is further enhanced with Astina's climate control system. The ventilation air volume can be regulated in four steps. The system has the further convenience of discharging warm

air from side vents, greatly assisting side window defrosting. So even on the coldest days the driver can have the clearest view.

Not only does the Astina consider the needs of people, it also provides room for their luggage. The Hardtop's boot lid opens at bumper level for easier loading and unloading, and has the added security of a lock system for the rear folding seats.





Door and seat trim vary from illustration.



Audio equipment and door trim may vary from illustration.



INTERIOR DESIGN.

When you sit in an Astina everything is at your fingertips. The tilt adjusted sports steering wheel makes Astina's power steering comfortable to operate; the tinted windows, the rear heated window and intermittent wipers with time adjustment will keep your vision clear; and little things like the fuel filler door and boot opening levers make the Astina very user friendly.

The special Sports bucket seat in front and the 60:40 split-fold rear seats are covered in stylish cloth trim to match the character of each body style. Your ears will be surrounded by sound from a 5-speaker AM/FM audio system. The 2.0 litre versions also feature a CD player. There's even an electric antenna and sunglasses box. Electric side mirrors, electrically operated windows and central locking are standard in all models.



1.8 HATCHBACK



2.0 HATCHBACK



1.8 HARDTOP



2.0 HARDTOP

S A F E T Y .

The Astina meets the Australian Government's stringent ADR69 safety standards. The Frontal Impact Moderating System (FIMS) allows mechanical parts in the engine compartment to become displaced during a crash to absorb impact. For protection during a side collision, the Astina has side sills with a larger cross section and reinforced cross members. Side door beam and impact boxes are built in for extra safety.

The rear mainframes of the Mazda Astina use thicker high-tensile steel sheets to improve protection in case of a crash from behind. The front seats have direct clamp seat belts which 'lock' instantly if a collision occurs.

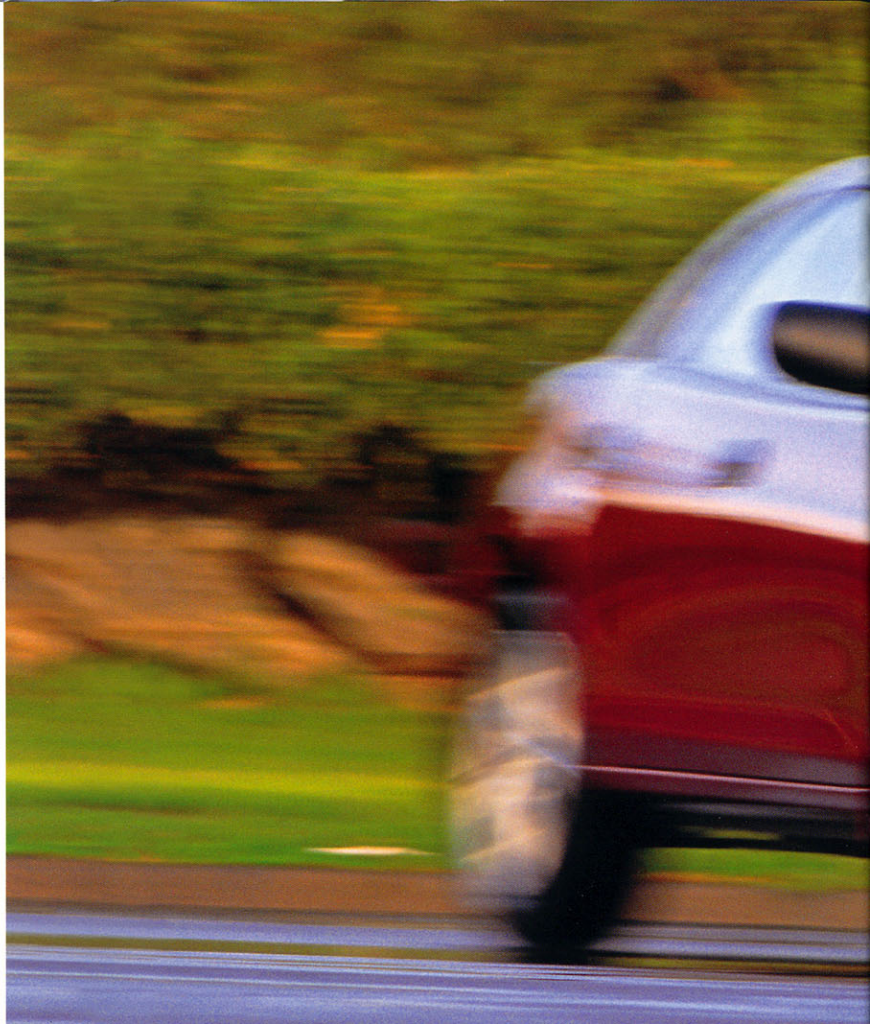
The 2.0 litre Astinas come with the added protection of both passenger and driver's side SRS airbags, while the 1.8 litre models have a standard driver side airbag. To provide the driver with the clearest view of the road Astina has been designed with a short nose



and expansive window area. A rain gutter in the front pillar keeps rain from streaming across side windows and door mirrors. There's also an enhanced side window defrost system.



Responsive acceleration, refined suspension and superior braking performance also contribute to Astina's philosophy of helping you to avoid an accident.





ASTINA

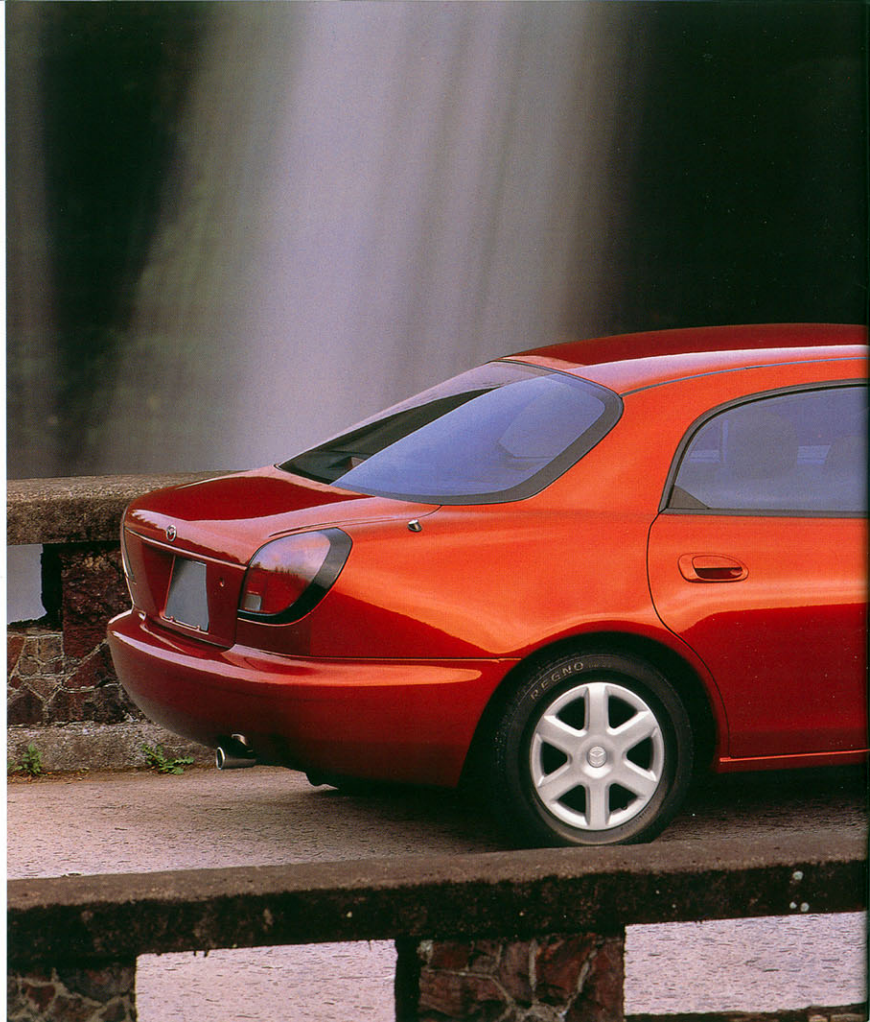
C U S T O M E R C A R E .

After Sales Service is one of our top priorities. Your Mazda Dealer's trained service teams are equipped with specialist knowledge and tools to keep your Astina in peak condition. They can even provide courtesy transportation while your car is being tuned up.

Servicing at your Mazda Dealer also means you can keep a comprehensive record on your Astina's service history, for trade-in or resale valuation.

A comprehensive range of genuine parts are stocked by Mazda Dealers, so every component in your Astina can be of the same high standard as it was when it left the factory. Mazda's 3 year/unlimited km warranty is generous on its own, covering repair and replacement of all parts. But now you can extend it by 1 year with unlimited km, with the Mazda extended warranty.

There's also a 6 year warranty against rust and corrosion on all panels. Service work performed by an Authorised Mazda Dealer and not covered by these warranties is covered for life by the Mazda Whole of Life Service Warranty. Ask your Mazda Dealer for details.





ENVIRONMENTAL PROTECTION.

You won't be the only one who benefits from your new Astina. While its engine is designed to give outstanding performance it also has good fuel economy. This saves valuable resources, as well as saving cash at the petrol pump. Like all Mazda passenger cars the Astina uses unleaded petrol and fully meets the Australian Government's stringent anti-pollution emission requirements.



All brake linings, clutch facings and gaskets are asbestos free. Mazda has also eliminated the use of ozone-damaging CFC's, by using an alternative refrigerant in the Astina's air conditioner. Back at the Mazda factory, the use of CFC's has been abolished in the entire production process. We've even used recycled plastics for undercovers of the engine compartment.

Most of the other durable plastic parts in the Astina are made from easily recyclable thermoplastics. So whatever colour Astina you decide to get, it'll also be green.





ASTR PA 0395



This brochure is printed in Australia on recycled paper
by a process which allows it to be recycled again.

323 ASTINA

All care is taken to ensure the accuracy of this brochure at the time of publication. Specifications, features and model availability may vary from State to State and may change without notice. This brochure should be read in conjunction with the owner's manual, warranty and specification sheet indicating model availability, specifications, options and features of the model depicted. Please consult your Mazda Dealer prior to placing an order to ascertain current information on model availability, specifications, options, features, price, warranties and insurance. Mazda Australia Pty. Limited will not be liable for any loss arising from the information in the brochures, whether in negligence or otherwise. Mazda Australia Pty. Limited. ACN 004690804, 37 Lorimer Street, Southbank, Victoria, 3006. Mazda 3 year unlimited km warranty is available on all Mazda passenger vehicles. Published August 1997. MAZ 3306



mazda